

SERIES 78

.438" Double Row Barrier Terminal Strip

Description

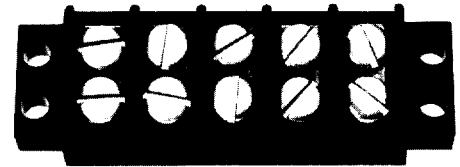
The series 78, double row barrier terminal strip is our choice for wire to wire terminations up to 20 Amps. The product is one of the most cost effective selections for up to 30 power interconnections.

The broad range of options allows you to configure the product for many applications.

Made in the USA, all Beau terminal blocks embody the highest quality standards in the industry-using the finest materials and world class manufacturing processes. They meet or exceed all applicable industry standards.

Features

- **Robust and durable**, series 78 screw terminals are ultrasonically welded into the thermoplastic insulator. The terminal can not be twisted or rotated even under excessive force.
- **Closed bottom** design allows the series 78 to be mounted directly on a sheet metal panel or placed over a panel cutout.
- **Wide variety of options**. Our broad range of screw, terminal, hardware and mounting options allows us to save you assembly costs and improve interconnect performance.



PRODUCT RATINGS

#6-32 BINDING HEAD SCREW

UL	Class B	15 Amps @ 300 V 14 AWG
	Class C	15 Amps @ 300 V 14 AWG
CSA	Class B	20 Amps @ 300 V 14 AWG
	Class C	20 Amps @ 300 V 14 AWG

#6-32 WIRE CLAMP SCREW

UL	Class B	20 Amps @ 300 V 12 AWG
	Class C	20 Amps @ 300 V 12 AWG
CSA	Class B	20 Amps @ 300 V 12 AWG
	Class C	20 Amps @ 300 V 12 AWG

NOTE: 3.5M screws carry #6-32 screw ratings.

TECHNICAL SPECIFICATIONS

ELECTRICAL

DWV	7500 VDC
IR	>5000 Megohms

MECHANICAL

Tightening torque	8 in.-lbs.
Maximum torque	13 in.-lbs.
Wire strip length	5/16"
Wire range	12 to 24 AWG

ENVIRONMENTAL

Continuous Use Temp	
RTI electrical	110°C
RTI mechanical w/o impact	110°C

APPROVALS

UL	File No. E48521
	Guide No. XCFR2
CSA	File No. 025562

MATERIALS

Insulator	Thermoplastic, UL94V-0, black
Terminal	Brass, nickel plate
Screws	#6-32, phillips/slotted, steel, zinc chromate plate

OPTIONS

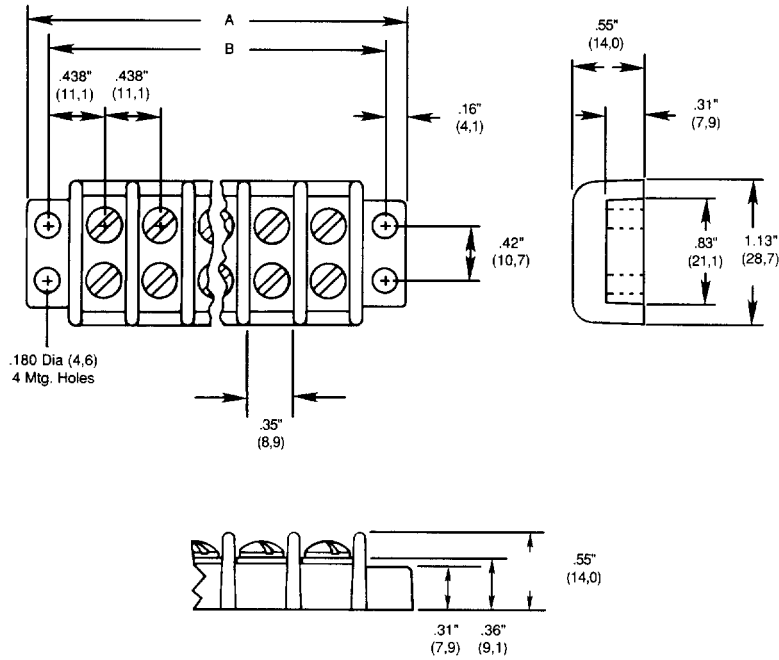
-45	Slotted screw
-45-56	Stainless steel screws, slotted
-47	Screws up, wire ready
-49	Brass, phillips/slotted screw
-50	Clamp washer, phillips/slotted screw
-58	No screws, barrier only
-59	Screws supplied unassembled
-60	One row screws unassembled
-61	One row screws not supplied
-C	No mounting ends
-V	130°C insulator

HOW TO ORDER

7	8	X	X	X	X
SERIES	TERMINAL STYLE	NO. OF POLES	OPTIONS		
	0 3 5	2 to 30	(Dash #s above and opposite page)		
	6 7				

*Consult factory for combinations of screw options.

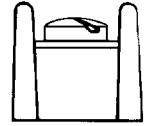
SERIES 78



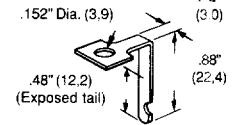
No. of Circuits	A		B	
	in.	mm	in.	mm
2	1.63	41,4	1.31	33,3
3	2.06	52,3	1.75	44,5
4	2.50	63,5	2.19	55,6
5	2.94	74,7	2.63	66,8
6	3.38	85,9	3.06	77,7
7	3.81	96,8	3.50	88,9
8	4.25	108	3.94	100
9	4.69	119	4.38	111
10	5.13	130	4.81	122
11	5.56	141	5.25	133
12	6.00	152	5.69	145
13	6.44	164	6.13	156
14	6.88	175	6.56	167
15	7.31	186	7.00	178
16	7.75	197	7.44	189
17	8.19	208	7.88	200
18	8.63	219	8.31	211
19	9.06	230	8.75	222
20	9.50	241	9.19	233
21	9.94	252	9.63	245
22	10.38	264	10.06	256
23	10.81	275	10.50	267
24	11.25	286	10.94	278
25	11.69	297	11.38	289
26	12.13	308	11.81	300
27	12.56	319	12.25	311
28	13.00	330	12.69	322
29	13.44	341	13.13	334
30	13.88	353	13.56	344

TERMINAL STYLES

STYLE 0
Screw
Terminal

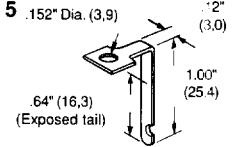


STYLE 3
Short
Solder



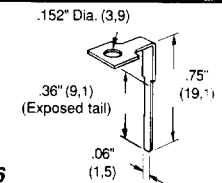
P/N 183

STYLE 5
Long
Solder



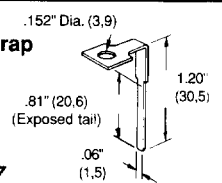
P/N 185

Style 6
PC
Long



P/N 186

Style 7
Wire Wrap



P/N 187